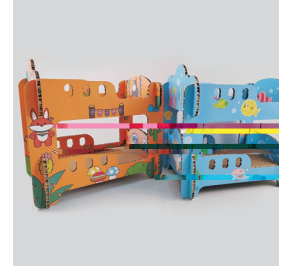
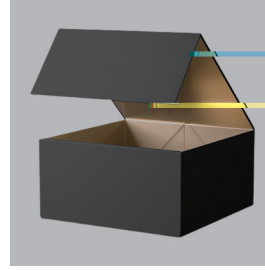
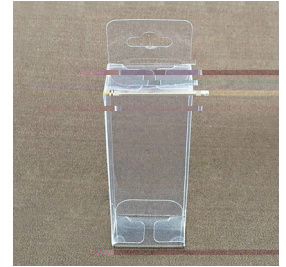
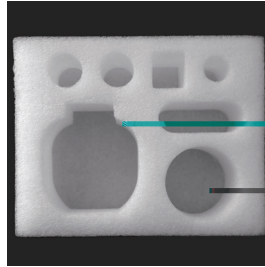


CB03 -2516

Product introduction



/



CB03 -2516

EPE

PVC



V-CUT

	CB03 -2516	CB03 -1816	CB03 -1113
		80-1500mm/s	
		50mm	
		±0.05mm	
	KT	PP	EPE EVA PVC
		±0.01mm	
	9.5kW	7.5kW	7.5kW
		380V ±10%	
	2500mm×1600mm	1800mm×1600mm	1100mm×1300mm
	3650mm×2620mm×1280mm	2950mm×2620mm×1280mm	2250mm×2320mm×1280mm

